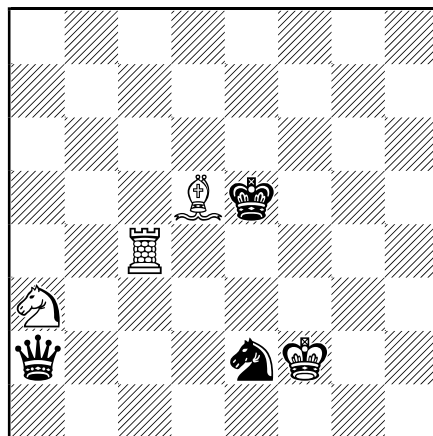


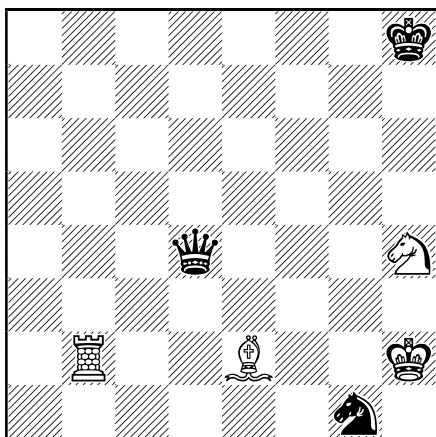
Kovalenko V, 1977, White wins

1. Bg5+ (1. Bd6+? Ka6 2. Nc5+ Kb6 3. Bc7+ Kc6) (1. Bf6+? Kb8) (1. Bh4+? Kb8 2. Bg3+ Kc8 3. Nb6+ Kd8) 1... Kb8 (1... Ka8 2. Nb6+ Kb8 3. Bf4+) (1... Ka6 2. Nc5+ Kb6 3. Bd8+ Kc6 4. Rc7+ Kd6 5. Ne4+ Ke6 6. Re7+ Kf5 7. Ng3+) 2. Bf4+ Kc8 3. Nb6+ Kd8 4. Bg5+! Ke8 5. Re7+ Kd8 (5... Kf8 6. Nd7+ Kg8 7. Nf6+) 6. Re5+ Kc7 7. Bd8+ 1-0



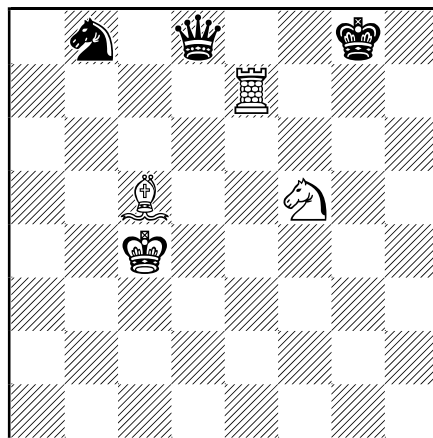
Visokosov A, 2000, Draw

1. Ra4! Kxd5 2. Nc4! Qb3! 3. Ne3+ Kd6 (3... Ke5 {main}) 4. Ra3 Qb1 5. Kxe2 Qb2+ 6. Kd1) 4. Ra3! Qb5 5. Ra5! Qd3 6. Rd5+ 1/2-1/2



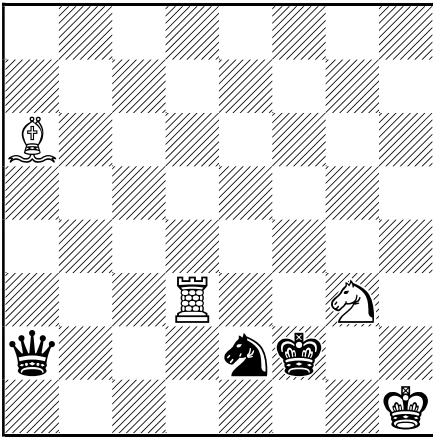
Matous M, 1981, Draw

1. Rb8+ Kh7 2. Rb7+ Kg8 3. Nf5! Qf2+ 4. Kh1 Qxe2 (4... Qxf5 \$144 5. Bc4+ Kh8 6. Rb8+ Kg7 7. Rb7+ Kg6 8. Rb6+=) (4... Nxe2 \$144 5. Nh6+ Kh8 6. Nf7+ Kg7 7. Ne5+ Kg8 8. Rb8+ Kh7 9. Rb7+=) 5. Ne7+ Kf7 6. Nd5+ Kf8 7. Rb8+ Kg7 8. Rb7+ Kh6 9. Rb6+ Kg5 10. Rg6+ Kf5 11. Rf6+ Kg4 (11... Ke5 \$144 12. Re6+ Kxe6=) 12. Rg6+ Kh4 13. Rh6+ Kg3 14. Rg6+= 1/2-1/2



Hornecker S, 2006, *

1. Nh6+ ({Thematic try} 1. Rg7+!? Kh8 2. Bd4 Nc6! 3. Rd7+ Kg8 4. Nh6+ Kf8 5. Bc5+ Ke8=) 1... Kf8 2. Rh7+ ({Thematic try} 2. Ra7+!? Ke8 3. Nf5 Qd7!!=) 2... Ke8 3. Nf5! Qa5 {main} (3... Qf6 {main} 4. Nd6+ Kd8 5. Bb6#) (3... Qd1 {main} 4. Nd6+ Kf8 (4... Kd8 5. Bb6#) 5. Ne4+ Ke8 (5... Kg8 6. Nf6#) 6. Nf6+Kd8 7. Bb6+ Kc8 8. Rc7+ Kd8 9. Rd7+ Kc8 10. Rxd1+-) 4. Nd6+ Kf8 (4... Kd8 5. Nb7+ Kc8 6. Nxa5+-) 5. Ne4+ Ke8 (5... Kg8 6. Nf6#) 6. Nf6+ Kd8 7. Bb6+ \$1Qxb6 8. Rh8+ Kc7 9. Nd5+ Kb7 10. Nxb6 Kxb6 11. Rxb8+- - { We do not so offensee a miniature - "the aristocrat". This work leaves a pleasant impression!} *



Rossi P, 2008, Draw

1. Ne4+ Ke1 2. Rd1+! Kxd1 3. Bxe2+ Ke1 (3... Qxe2 4. Nc3+) (3... Kxe2 4. Nc3+) 4. Bf3 Kf1 5. Be2+! Ke1 (5... Qxe2 6. Ng3+) (5... Kxe2 6. Nc3+) 6. Bf3 Qa3 7. Bg2!
1/2-1/2